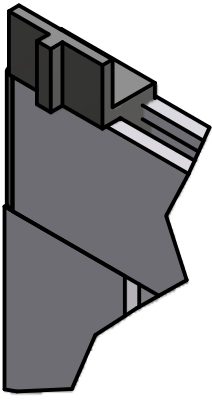
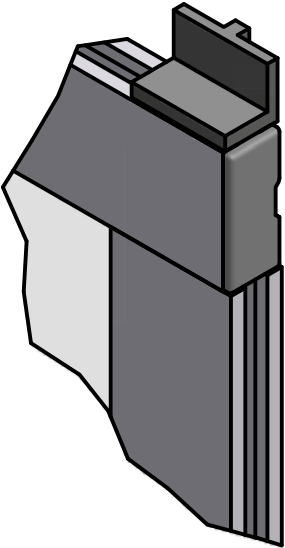
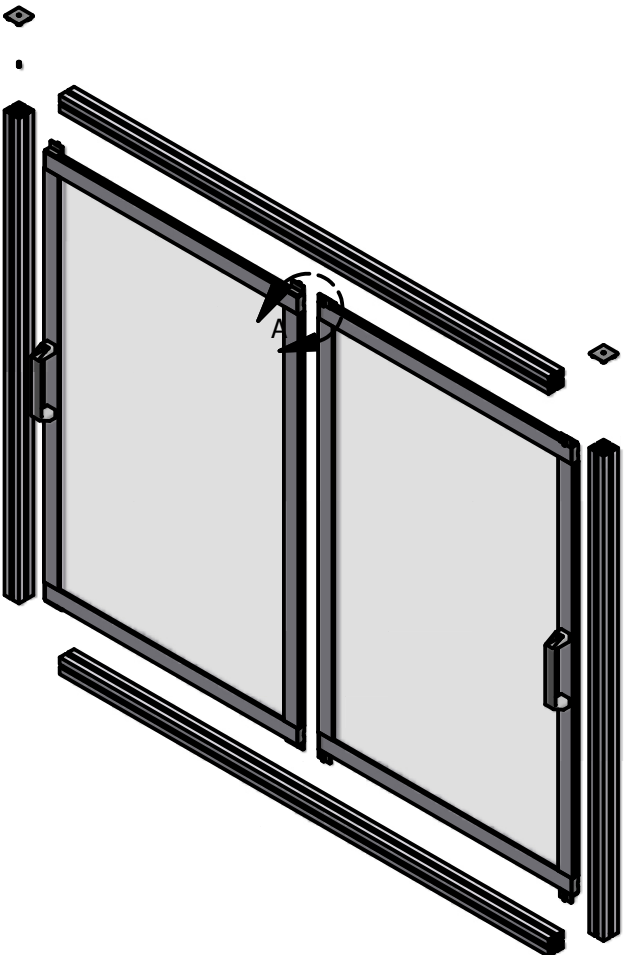
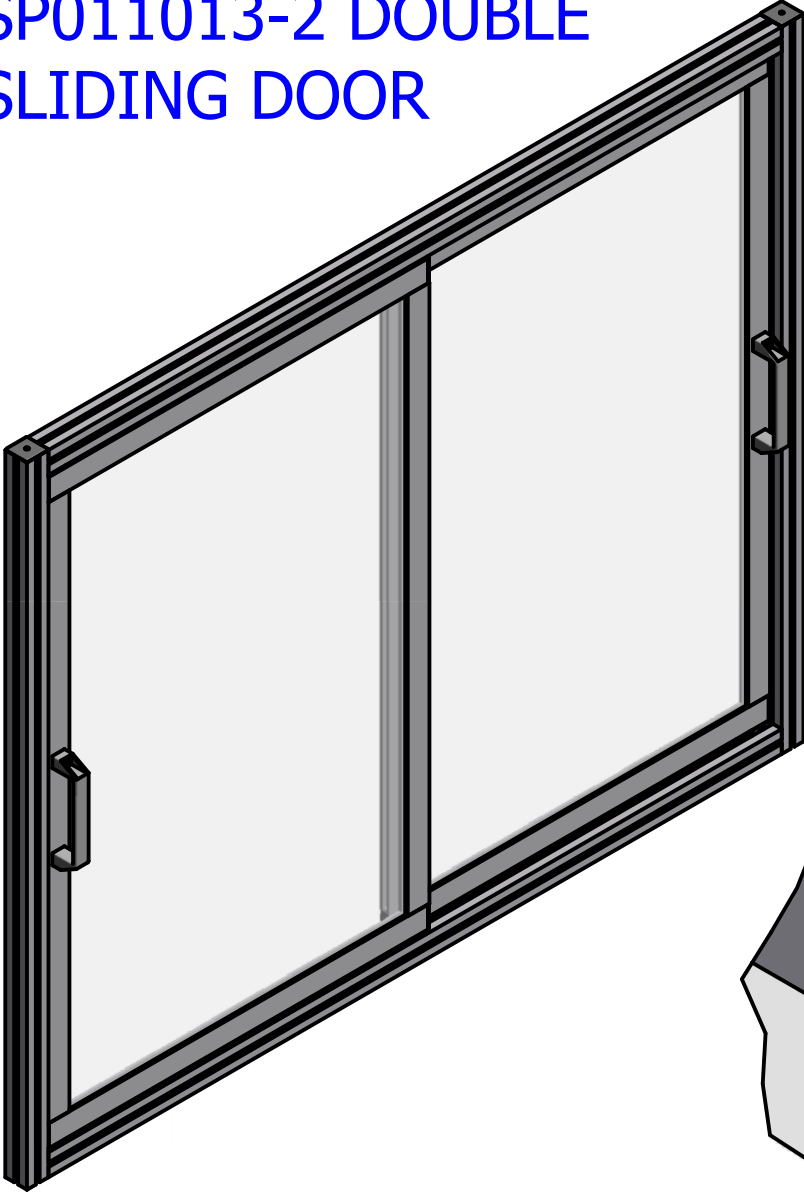
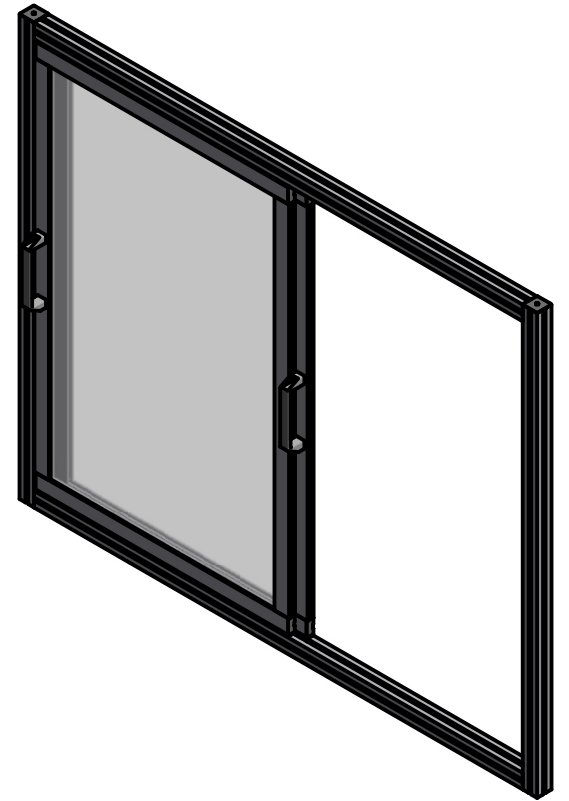
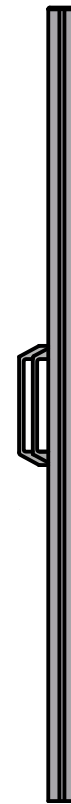
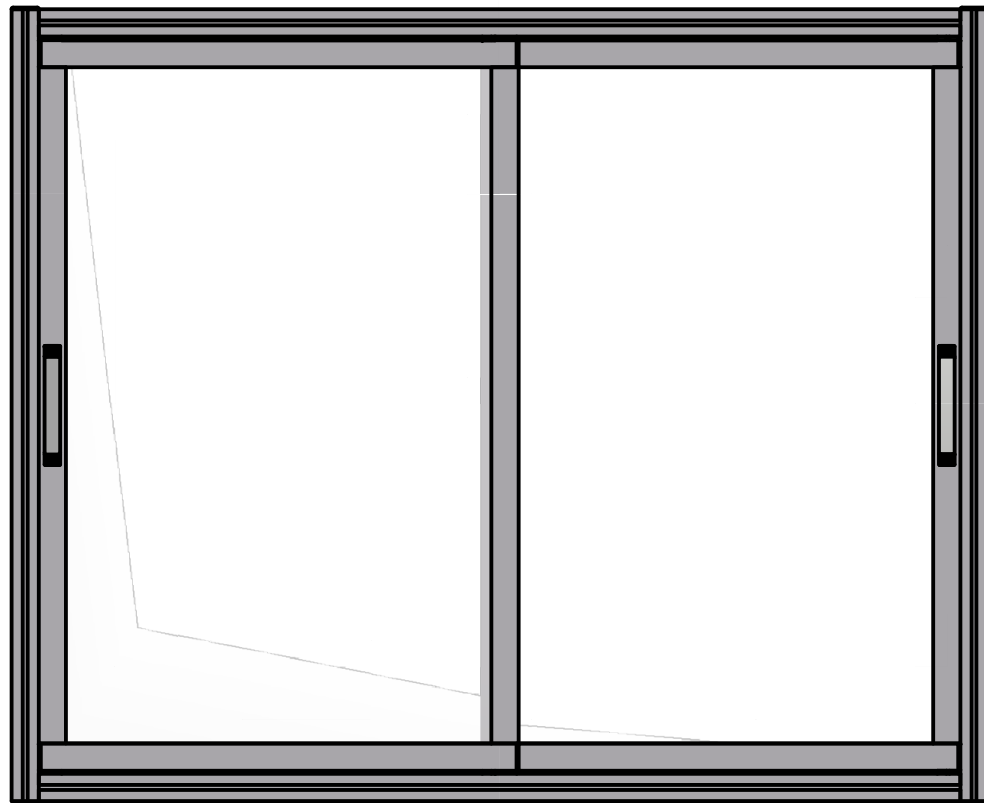
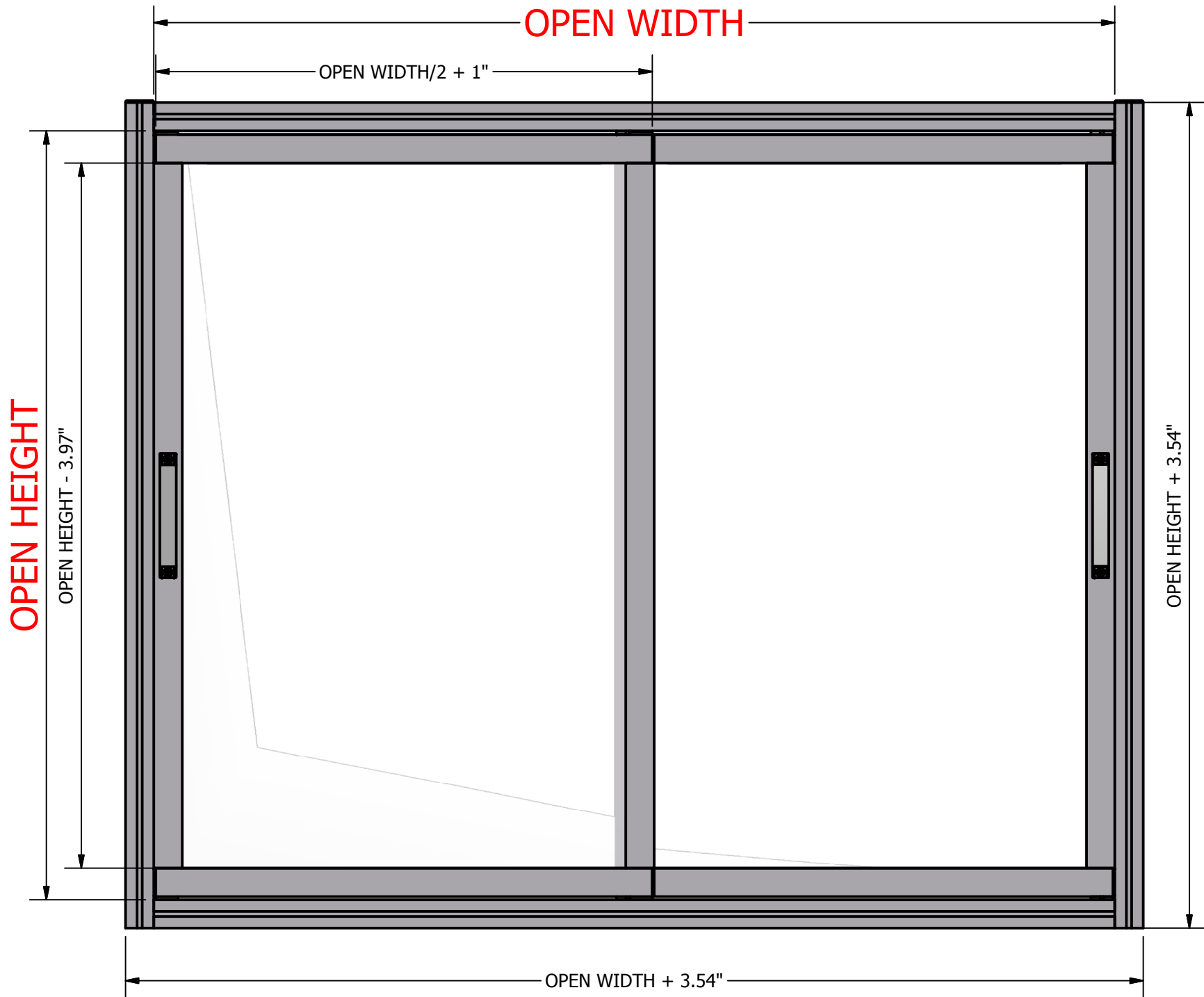
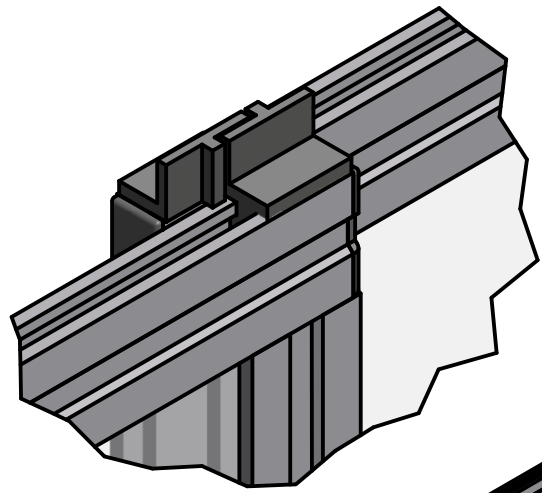


SP011013-2 DOUBLE
SLIDING DOOR

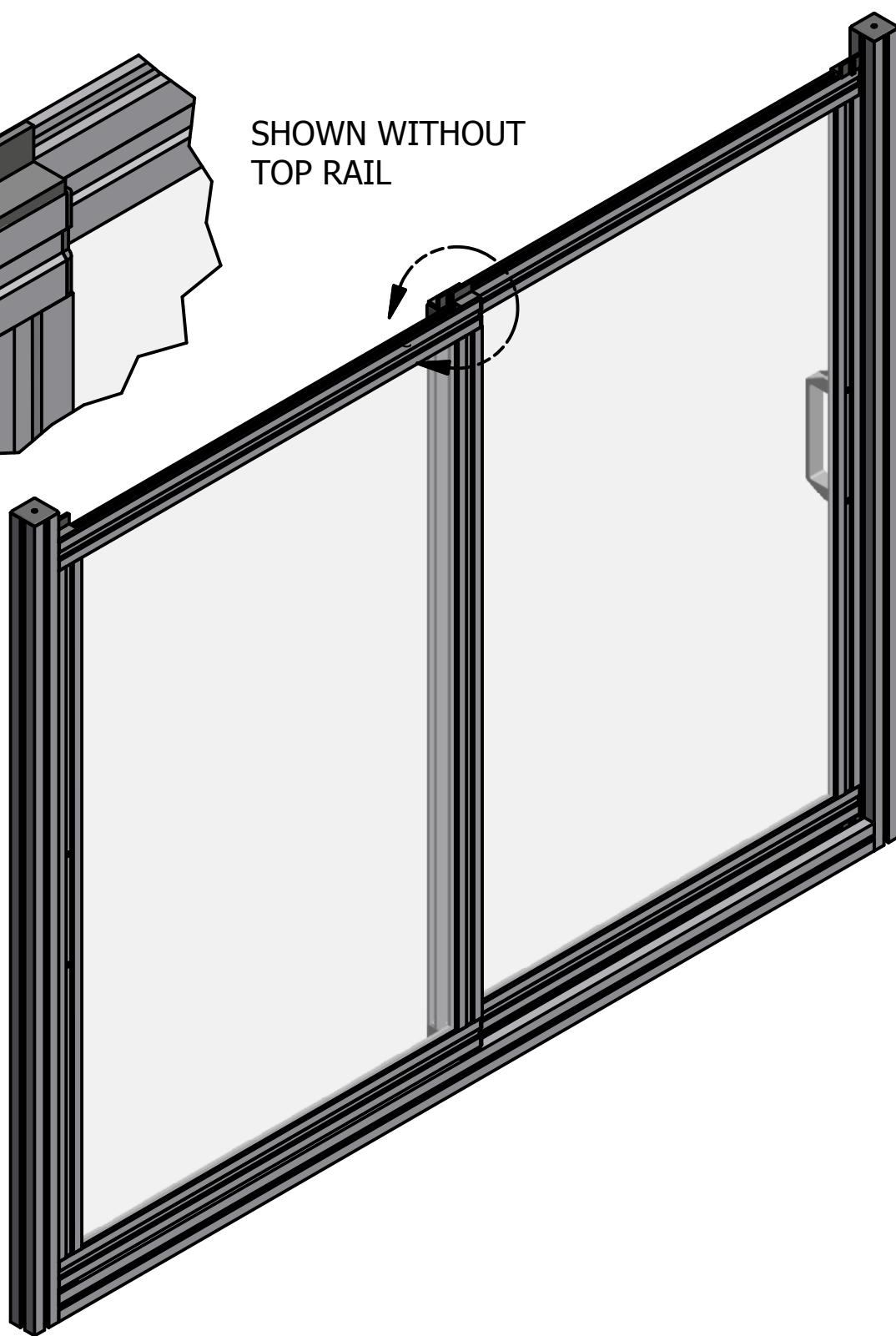




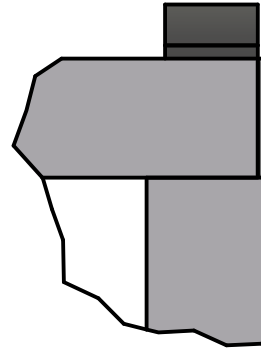




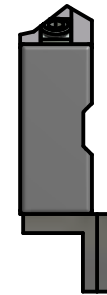
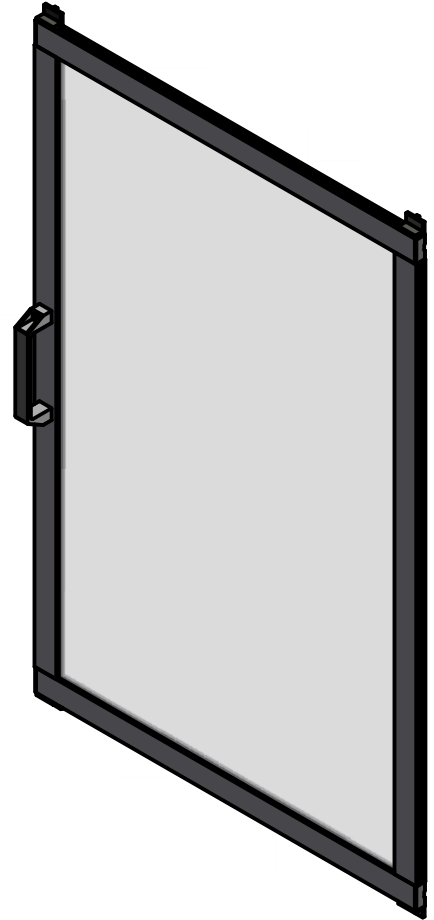
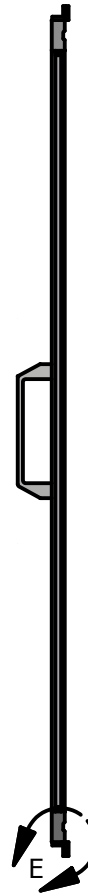
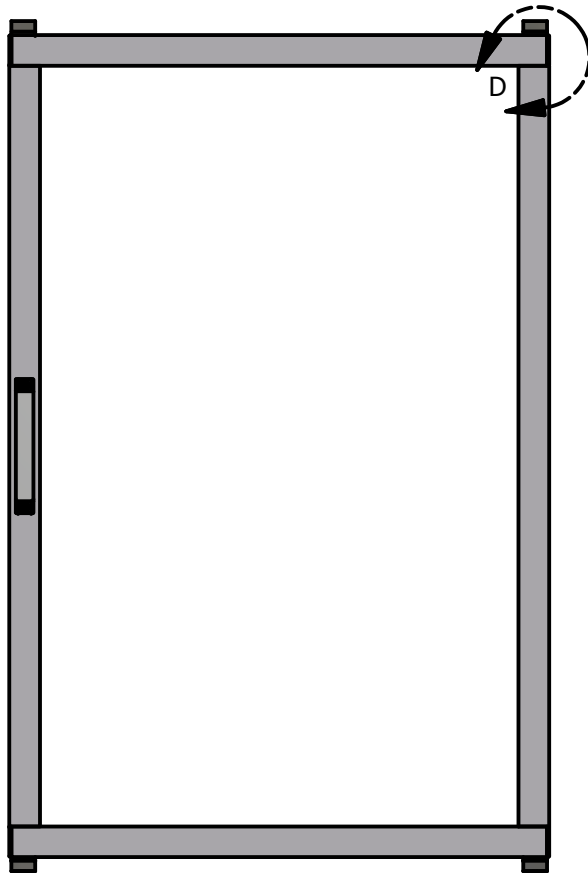
SHOWN WITHOUT
TOP RAIL



FRONT DOOR

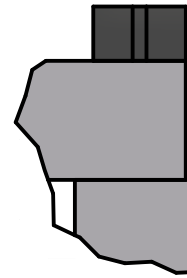


CAP FLUSH. USE
POWER- LOCK SF SHORT

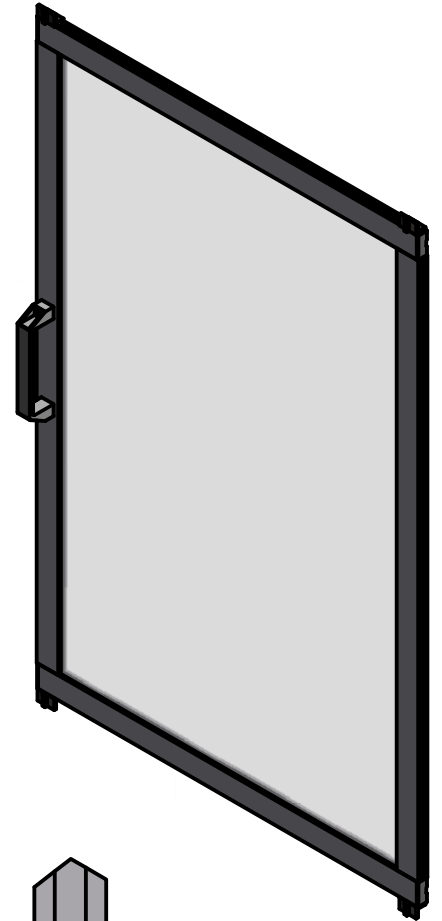
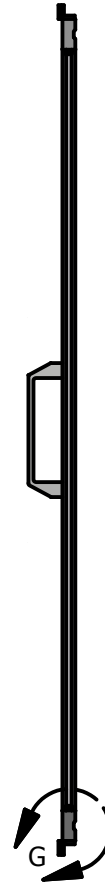
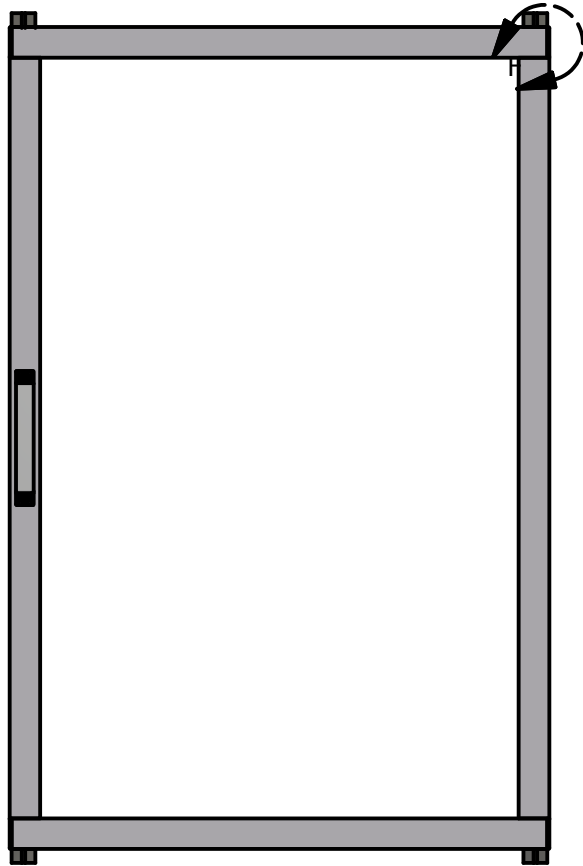


FACE GUIDES
TOWARDS BACK

BACK DOOR



END CAP FLUSH USE
POWER-LOCK SF SHORT



FACE GUIDES
TOWARDS FRONT